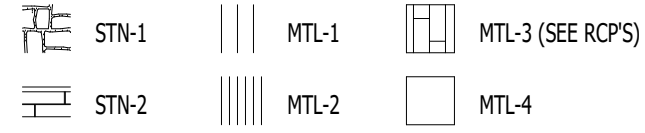


THE SHADING AND COLOR QUALITY ARE
INDICATED BY THE COLOR NAME
LETTERS. PRINTED CORRECTLY.

THE SHADING AND COLOR QUALITY ARE
INDICATED BY THE COLOR NAME
LETTERS. PRINTED CORRECTLY.

EXTERIOR FINISH MATERIAL SCHEDULE						
TAG	PRODUCT COLOR	MANUFACTURER	PRODUCT FINISH	MODEL	PRODUCT SIZE	INSTALLATION
WALLS- STONE						
STN-1	ANTIQUE CREAM	CORONADO STONE	PRE-FINISHED	COUNTRY RUBBLE	2" TO 8" IN HEIGHT AND UP TO 23" IN LENGTH	BLIND STONE FROM SEVERAL DIFFERENT BOXES TO ENSURE PROPER COLOR AND SIZE VARIATION
STN-2	BLACK FOREST	CORONADO STONE	PRE-FINISHED	6" SPLIT LESTONE	6" X 30" TYP	HORIZONTAL BROKEN RANGE ASHLAR - RANDOMIZED PATTERN
WALLS- METAL PANEL						
MTL-1	GRANITE	PAC-CLAD	PRE-FINISHED	FLUSH WALL PANEL (SMOOTH)	1" DEEP, 12" O.C. (24 GA)	
MTL-2	MIDNIGHT BRONZE	PAC-CLAD	PRE-FINISHED	PRECISION SERIES WALL PANEL	7/8" DEEP, 16" O.C. (24 GA)	
ROOFING- METAL						
MTL-4	MIDNIGHT BRONZE	PAC-CLAD	PRE-FINISHED	FLUSH WALL PANEL (SMOOTH)	1" DEEP, 12" O.C. (24 GA)	
CEILING - METAL PANEL						
MTL-3	WOODGRAIN FINISH	PAC-CLAD	PRE-FINISHED	SPRINT FLUSH SERIES	1" DEEP, 7" O.C. (24 GA)	

MATERIAL FINISH PATTERN LEGEND



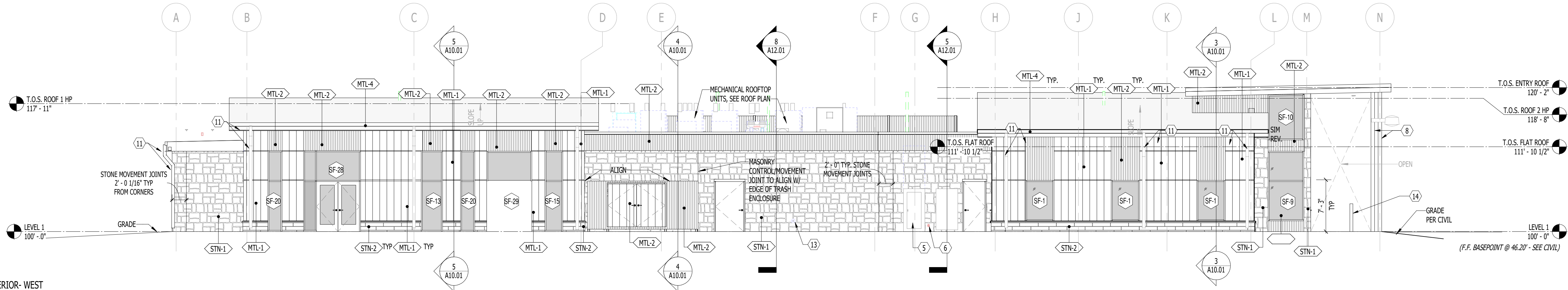
ELEVATION NOTES BY NUMBER

- TOP OF METAL PANEL REVEAL TO ALIGN WITH TOP OF ADJACENT STOREFRONT SYSTEMS AND UNDERSIDE OF ADJACENT CANOPIES TO CREATE HORIZONTAL DATUM ACROSS BUILDING FACADE.
- MECHANICAL EQUIPMENT SCREEN, SEE ROOF PLAN AND STRUCTURAL.
- FIRE DEPARTMENT CONNECTION, SEE FIRE PROTECTION DRAWINGS.
- HORIZONTAL ELECTRICAL OUTLET AT 18" A.F.F. TO AVOID STONE SILL AND FLASHING. OUTLET TO BE CENTERED ON METAL PANEL.
- UTILITY METER & C.T. CABINET, SEE ELECTRICAL.
- HOSE BIB CONNECTION, SEE PLUMBING.
- FUTURE BUILDING SIGNAGE BY SIGN VENDOR. COORDINATE FOR BLOCKING REQUIREMENTS TO SUPPORT SIGN.
- EXTERIOR CANOPY COLUMNS TO BE SHOP PRIMED AND FIELD PAINTED BLACK - EXTERIOR PAINT TO BE APPROVED BY ARCHITECT. SEE FLOOR PLAN FOR QUANTITY & A12 SERIES & STRUCTURAL FOR CONNECTION DETAILS.
- KNX BOX, SEE SPECIFICATIONS.
- DOWNPOUT EXTENSION, SEE ARCHITECTURAL SITE PLAN.
- ALUMINUM GUTTER & DOWNSPOUTS.
- WALL EXHAUST, SEE MECHANICAL.
- OVERFLOW DOWNSPOUT NOZZLE THIS AREA/SEE PLUMBING - APPX 18" A.F.F., COORDINATE WITH MASONRY SIZING.
- ADA STANCHION.

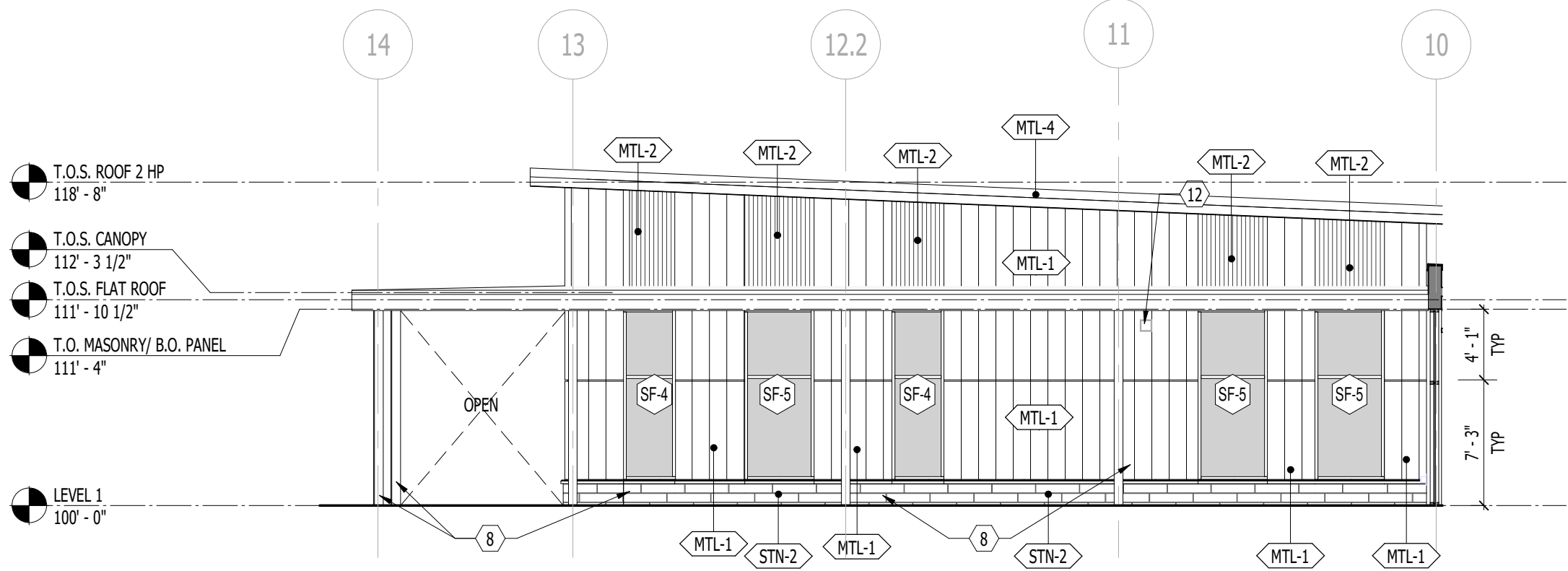
GENERAL NOTES - ELEVATIONS & SECTIONS

- ARCH 100'-0" FFE ELEVATION = 46.20' CIVIL AND SURVEY - SEE CIVIL & SURVEY FOR ADDITIONAL INFORMATION.
- SEE A09.01 ELEVATIONS SHEET / ELEVATION TAGS & SCHEDULE FOR MATERIALS & MATERIALS CALLOUTS.
- ALL EXTERIOR GRADE BEAMS & FACE OF CONC F.F. TO ALIGN W/ COL GRIDS, UNO - SEE LEVEL 1 DETAILS ON A12 & A13 SERIES, FOR VARIATIONS OF WALL SYSTEMS AT GRADE VS AT EXTERIOR WALKWAY CONDITIONS.
- SEAL ALL THRU-WALL PENETRATIONS WEATHER TIGHT - VERIFY QUANTITY AND LOCATIONS. PROVIDE BIRD SCREENS OVER ANY PIPE OPENINGS.
- PROVIDE CONTROL JOINTS IN MASONRY WALL AT (UNLESS OTHERWISE NOTED)
 - 2'-0" EACH SIDE OF INSIDE OUTSIDE BUILDING CORNERS.
 - BUILDING HEIGHT CHANGES.
 - ENDS OF ALL LINTEL BEAMS SUPPORTING MASONRY OPENINGS.
 - MAXIMUM 32'-0" ELSEWHERE.
- PROVIDE WOOD BLOCKING FOR SIGNAGE AS REQUIRED. VERIFY LOCATION OF BLOCKING.
- PAINT EXPOSED GAS PIPING, CONDUIT AND RELATED METAL TO MATCH ADJACENT FINISH.
- ALL METAL PANELS TO ALIGN WITH WINDOWS. COORDINATE WITH ELEVATIONS WHERE METAL PANEL SYSTEMS TRANSITION BETWEEN TYPES.
- ALL PRODUCTS AND MATERIALS TO BE INSTALLED PER MANUFACTURER'S RECOMMENDATIONS AND INDUSTRY STANDARDS.
- ALL EXPOSED FLASHING, TRIM, LOVERS, FASTENERS, COVERS, SEALANTS & ACCESSORIES TO BE PREFINISHED WITH CUSTOM COLORS SELECTED BY ARCHITECT.
- ALL EXTERIOR EXPOSED COLUMNS TO HAVE HIGH-PERFORMANCE COATING APPLIED.

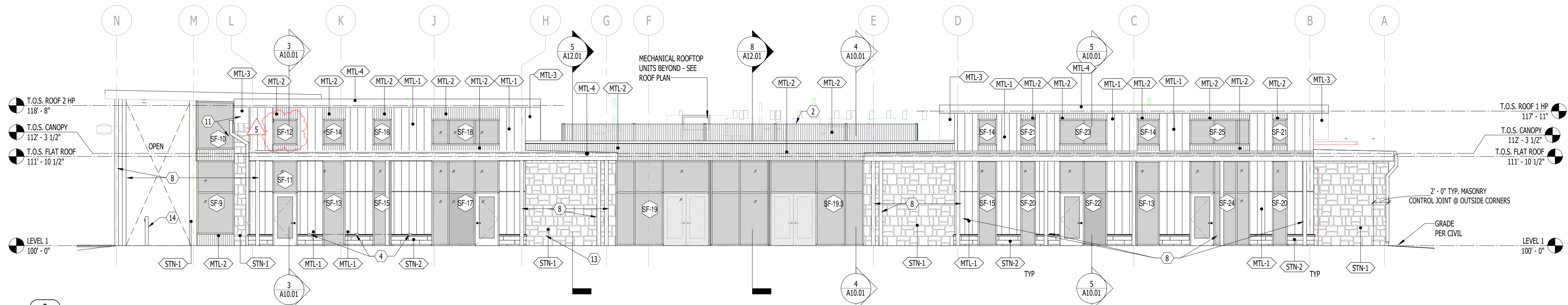
4 ELEVATION- EXTERIOR- WEST
A09.01 1/8" = 1'-0"



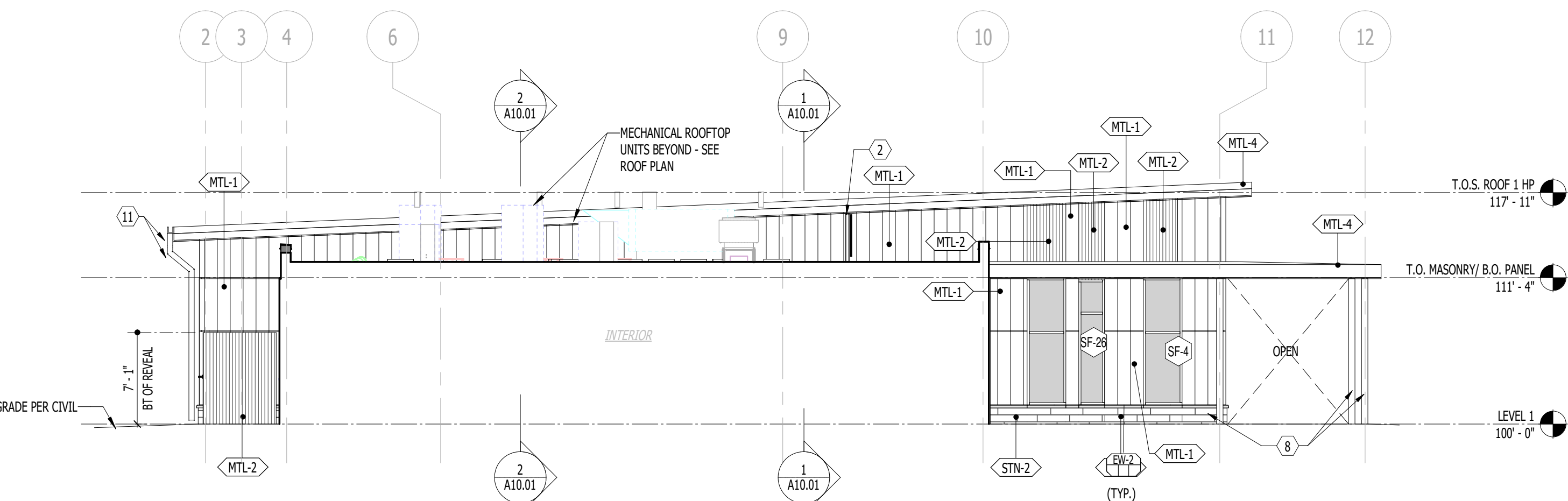
7 ELEVATION - EXTERIOR- NORTH (WEST SIDE)
A09.01 1/8" = 1'-0"



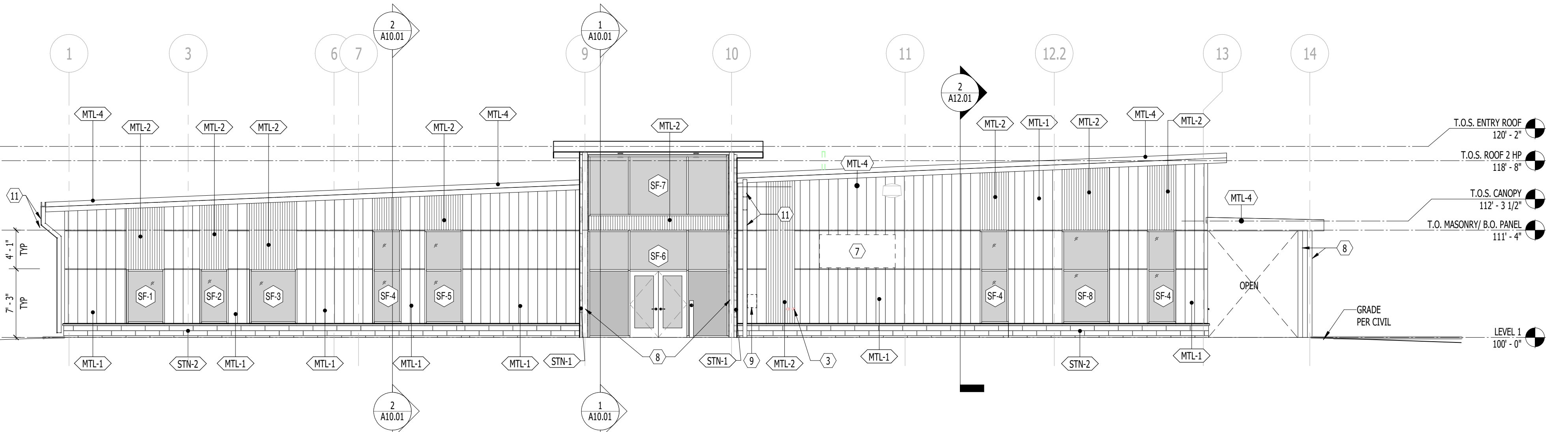
3 ELEVATION- EXTERIOR- EAST
A09.01 1/8" = 1'-0"



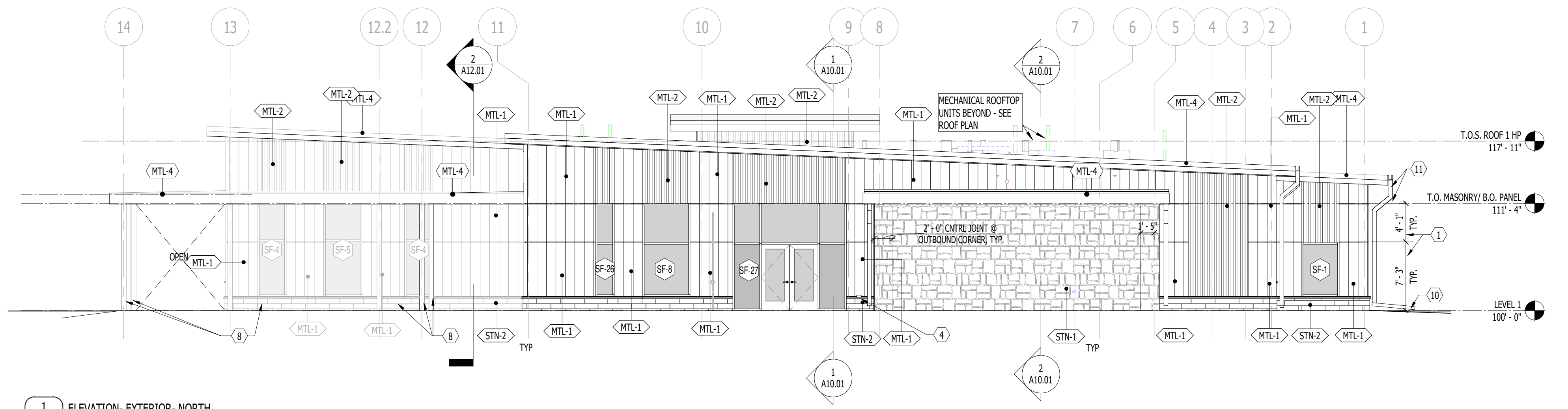
6 ELEVATION - EXTERIOR- NORTH (EAST SIDE)
A09.01 1/8" = 1'-0"



2 ELEVATION- EXTERIOR- SOUTH
A09.01 1/8" = 1'-0"



1 ELEVATION- EXTERIOR- NORTH
A09.01 1/8" = 1'-0"



NELSON
Nelco Architecture, Inc.

100 S. Independence Mall West
Suite 500
Philadelphia, PA 19106
Phone: (215) 925-6562

WWW.NELSONWORLDWIDE.COM

DESIGN ARCHITECT
FULL CIRCLE INDIGENOUS PLANNING + DESIGN
1215 SE 10TH STREET, #101
612-619-8988

ARCHITECT OF RECORD
NELSON WORLDWIDE
805 S MARKET ST. A16
SUITE 2020
612-619-8988

CONSTRUCTION ADMIN ARCHITECTURAL REP
NEA KAPLAN STUDIO
274 WEST HILL AVENUE
SUITE 101
SUITE 101
SUITE 101

MEPP ENGINEERING
WINDOW ENGINEERS & CONSULTANTS,
8465 PARKWAY AVE
SUITE 200
972-654-6440

STRUCTURAL ENGINEER
HARRIS CONSULTANTS
1813 BROADWAY ST.
NEW ORLEANS, LA 70113
504-582-5844

LANDSCAPE ARCHITECTURE
DANA BROWN & ASSOCIATES
1015 MARSH STREET
NEW ORLEANS, LA 70115
504-245-2819

CIVIL ENGINEER
QWA, INC.
9928 CORPORATE CAMPUS DRIVE, SUITE 1000
GREENVILLE, SC 29615
803-585-2222

FOOD SERVICE
MEYHART CONSULTING, LLC
101 KRAMER CT
MADEIRA, CA 94705
925-624-0700

CHANA BROWN
ARCHITECT

CHANA BROWN
ARCHITECT

CHANA BROWN
ARCHITECT

CHANA BROWN
ARCHITECT

CHANA BROWN
ARCHITECT

CHANA BROWN
ARCHITECT

CHANA BROWN
ARCHITECT

CHANA BROWN
ARCHITECT

CHANA BROWN
ARCHITECT

CHANA BROWN
ARCHITECT

CHANA BROWN
ARCHITECT

CHANA BROWN
ARCHITECT

CHANA BROWN
ARCHITECT

CHANA BROWN
ARCHITECT

CHANA BROWN
ARCHITECT

CHANA BROWN
ARCHITECT

CHANA BROWN
ARCHITECT

CHANA BROWN
ARCHITECT

CHANA BROWN
ARCHITECT

CHANA BROWN
ARCHITECT

CHANA BROWN
ARCHITECT

CHANA BROWN
ARCHITECT

CHANA BROWN
ARCHITECT

CHANA BROWN
ARCHITECT

CHANA BROWN
ARCHITECT

CHANA BROWN
ARCHITECT

CHANA BROWN
ARCHITECT

CHANA BROWN
ARCHITECT

CHANA BROWN
ARCHITECT

CHANA BROWN
ARCHITECT

CHANA BROWN
ARCHITECT

CHANA BROWN
ARCHITECT

CHANA BROWN
ARCHITECT

CHANA BROWN
ARCHITECT

CHANA BROWN
ARCHITECT

CHANA BROWN
ARCHITECT